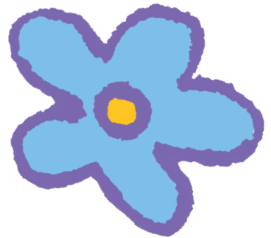


The CT Birth to Three System's Newest Additions!



Expanded Eligibility for:

- babies born at 28 weeks gestation or less,
- babies born weighing less than 1,000 grams,
- babies and toddlers with mild or unilateral hearing loss,
- and toddlers with significant delays in expressive language with a biological risk factor.

ALL babies in these groups should be referred for early intervention from the CT Birth to Three System.

Call **1-800-505-7000** or
Refer on-line at **www.birth23.org**.

These are new additions to our long list of medical conditions that make a child automatically eligible. Infants and toddlers without a diagnosis but who show a significant developmental delay can also receive early intervention supports.

Questions? Call 1-800-505-7000